

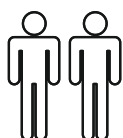
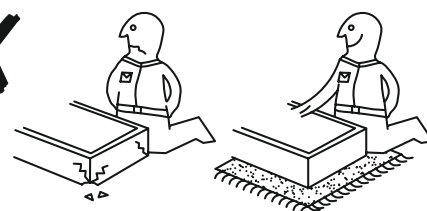
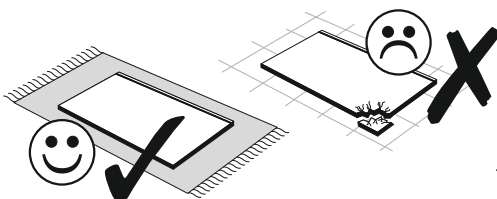
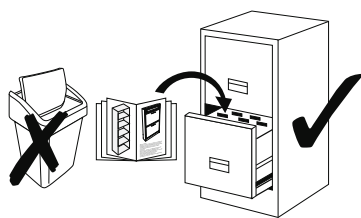
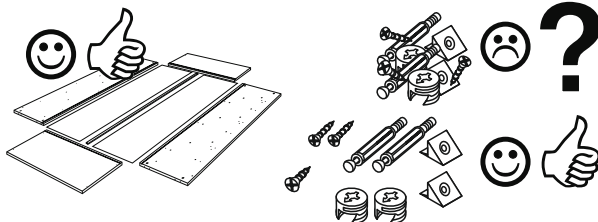
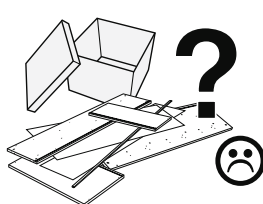
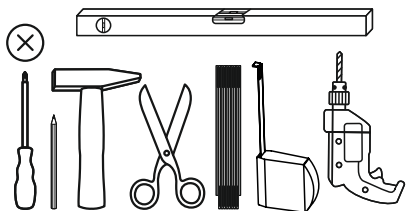
Das Lowboard kann spiegelbildlich montiert werden.
Diese Anleitung zeigt die Ausführung mit der Tür auf der linken Seite.

0772-LB_111

Lowboard

REPC-Nr.:

Service • Assistenza • Dienstverlening • Servis
Servis • Szerviz • Сервисная служба



Colli 1/3 : (13) (14) (15) (16) (17) (18) (19) (20) (21) (22) (23) (24)

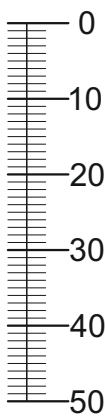
Colli 2/3 : (1) (2) (3) (4) (5) (6) (7) (8) (9) (10) (11) (12) Beutel 1/5, 2/5, 3/5, 4/5, 5/5

Colli 3/3 : (25)

CHICAGO

Beutel 1/5

1-10		1-30		1-70		1-80		1-90		1-122	
2x	6,3x50	45x	3x16	2x	3x30	12x	3,5x13	4x	3,5x20	2x	4x13
1-190		1-200		1-349		2-08		2-10		2-20	
12x	M4x20	12x	6,3x13	12x	M4	4x	h=10mm	18x	h=12mm	22x	
2-160											
4x											



Beutel 2/5

1-123		2-173		
12x	4x15	6x		

Beutel 3/5

3-07		3-11		3-42	
2x		5x		5x	8er

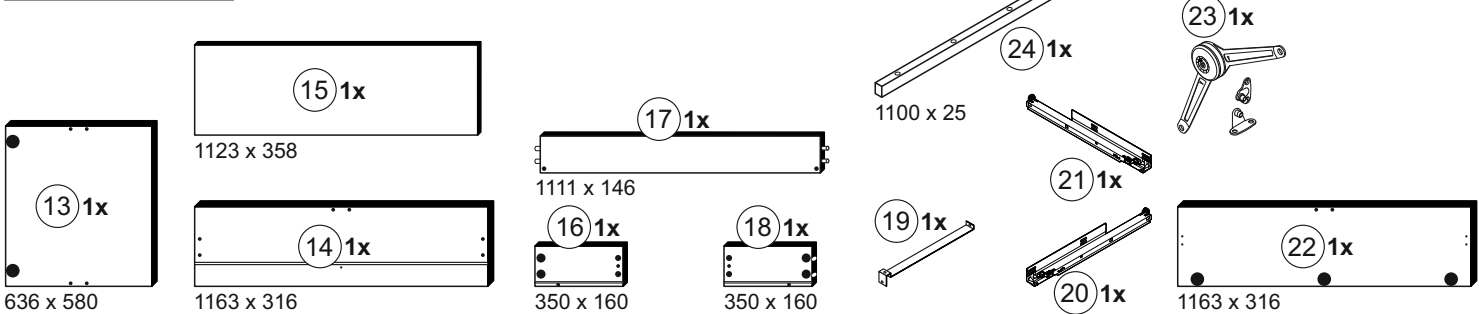
Beutel 4/5

2-103		5-01		5-130		5-185	
12x	8x30	10x		2x		4x	
5-260		5-265		5-280		6-425	
1x		1x		1x		3x	

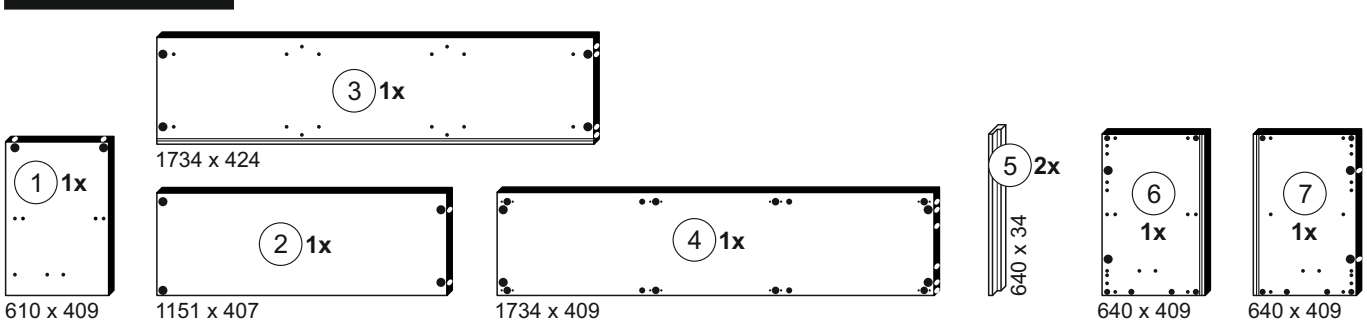
Beutel 5/5

1-36	
4x	4x40

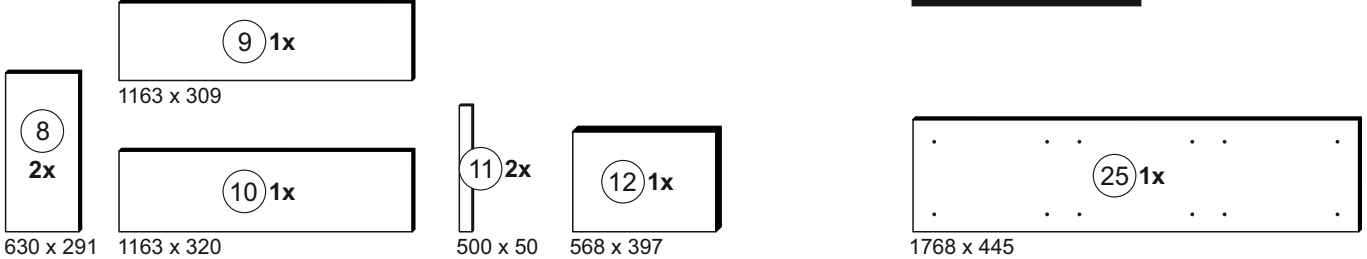
Colli 1/3

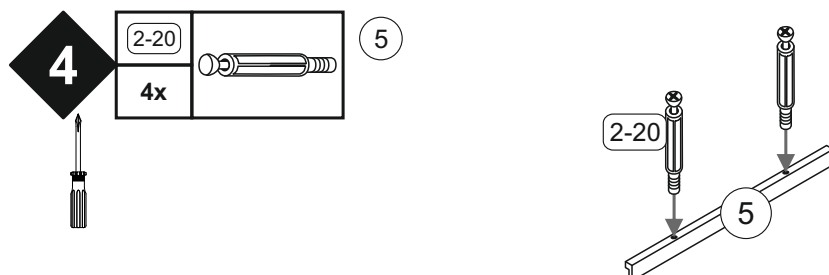
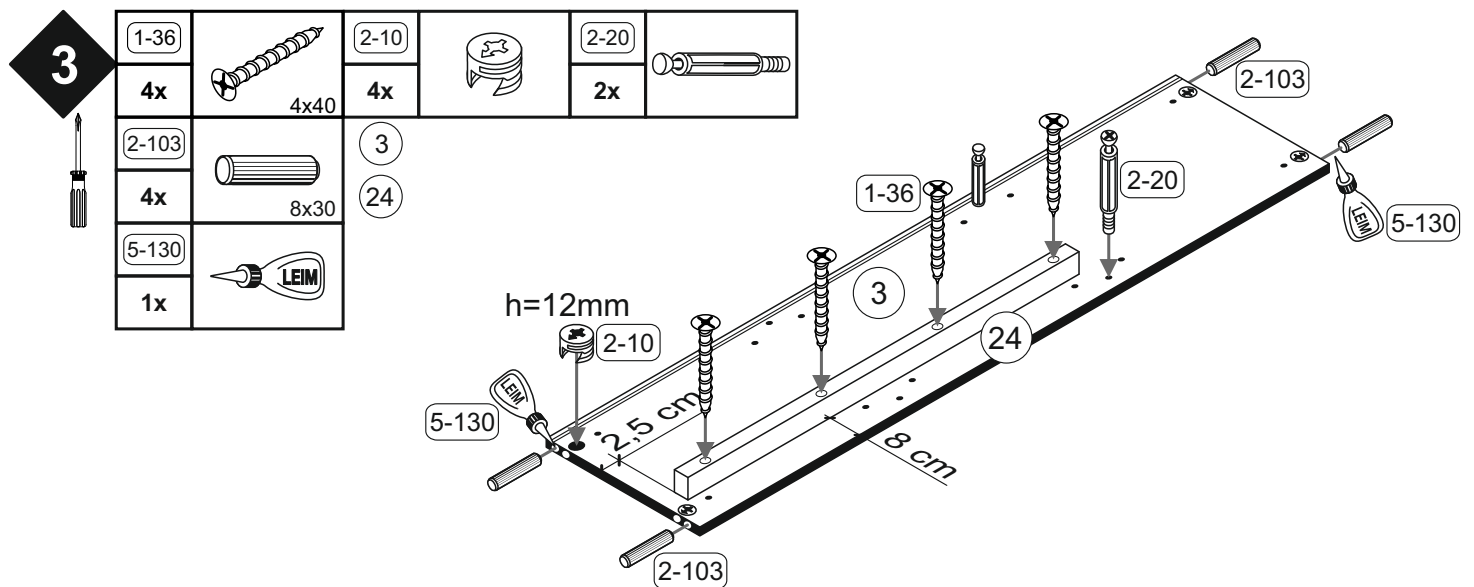
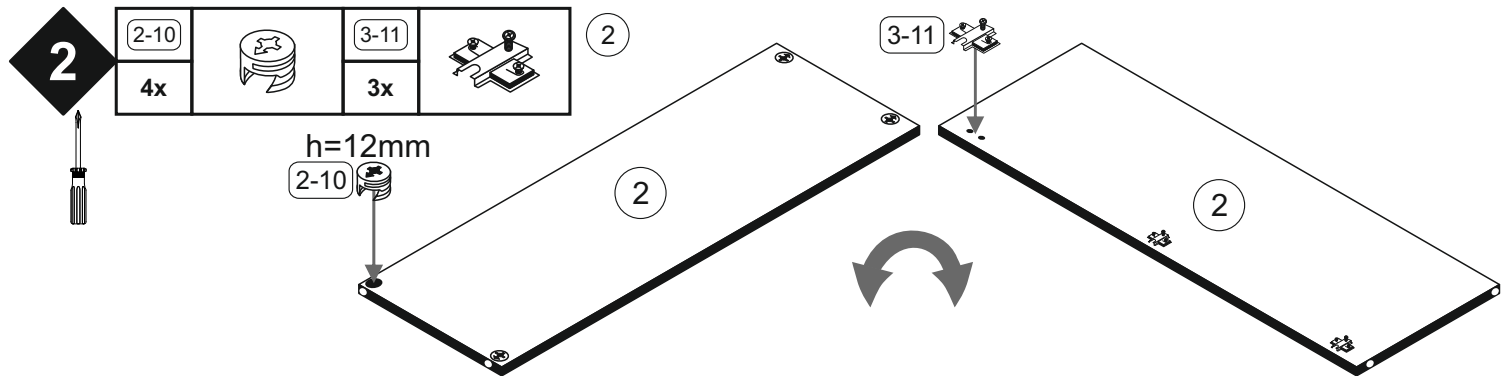
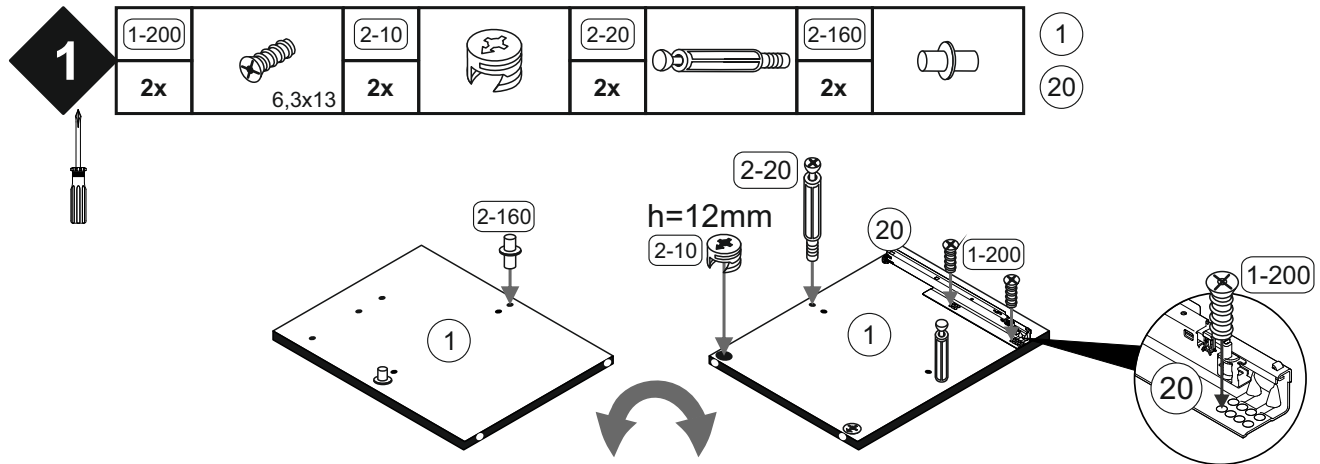


Colli 2/3



Colli 3/3





CHICAGO

5

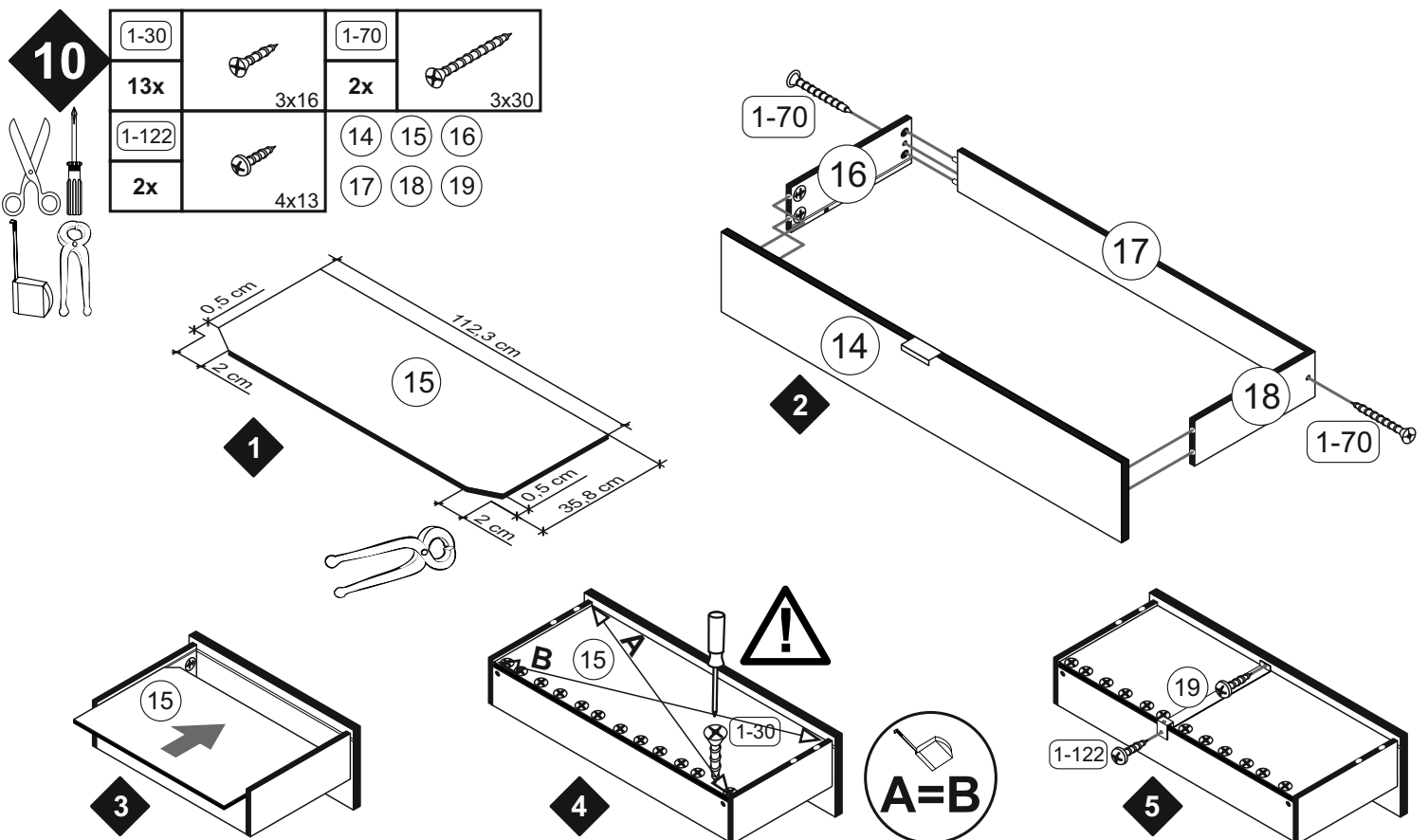
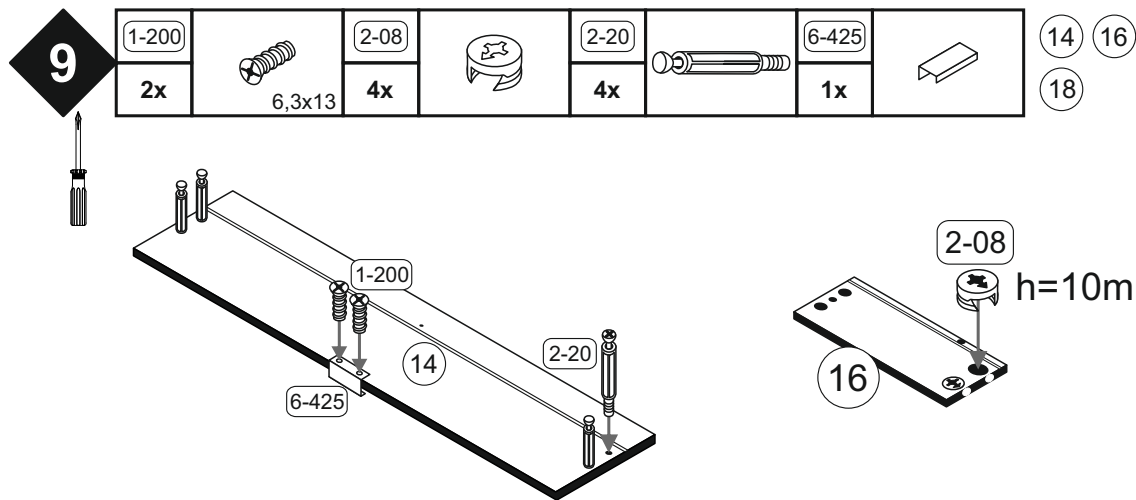
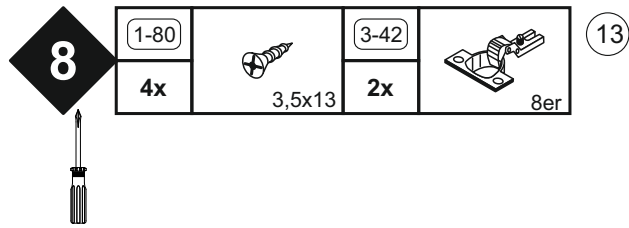
2-10		2-103	
4x		8x	8x30
5-130		4	
1x			

6

2-10		2-20		3-11		2-160	
2x		4x		2x		2x	

7

1-200		2-10		2-20	
2x	6,3x13	2x		6x	



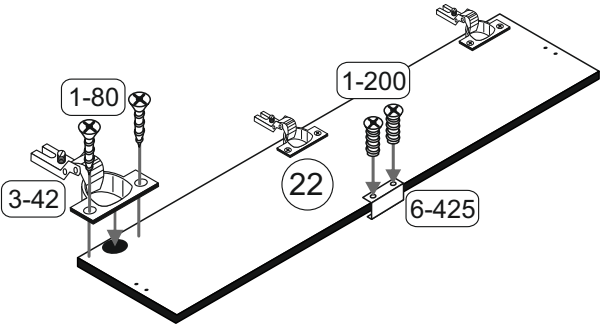
CHICAGO

11



1-80		1-200	
6x	3,5x13	2x	6,3x13
3-42		6-425	
3x	8er	1x	

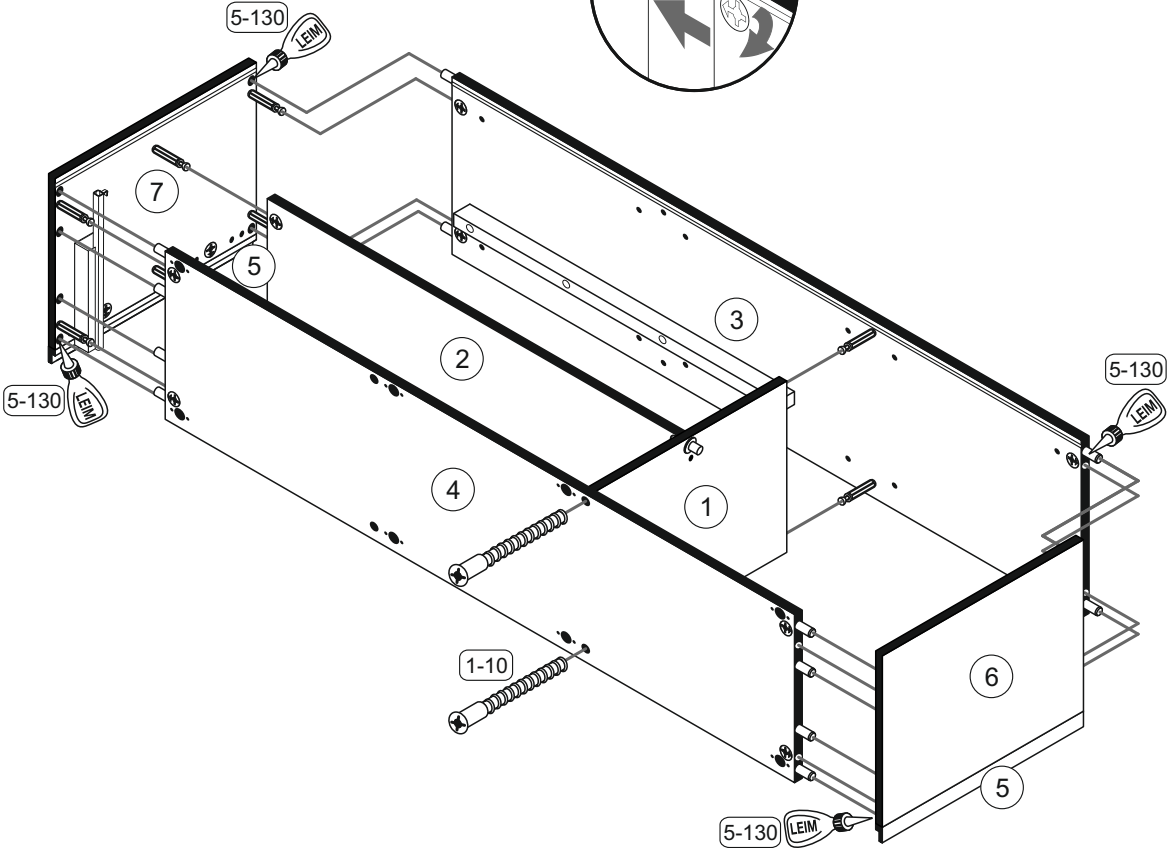
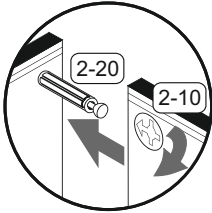
22

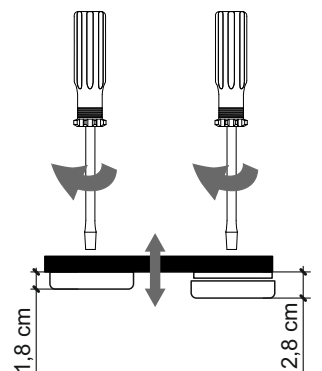
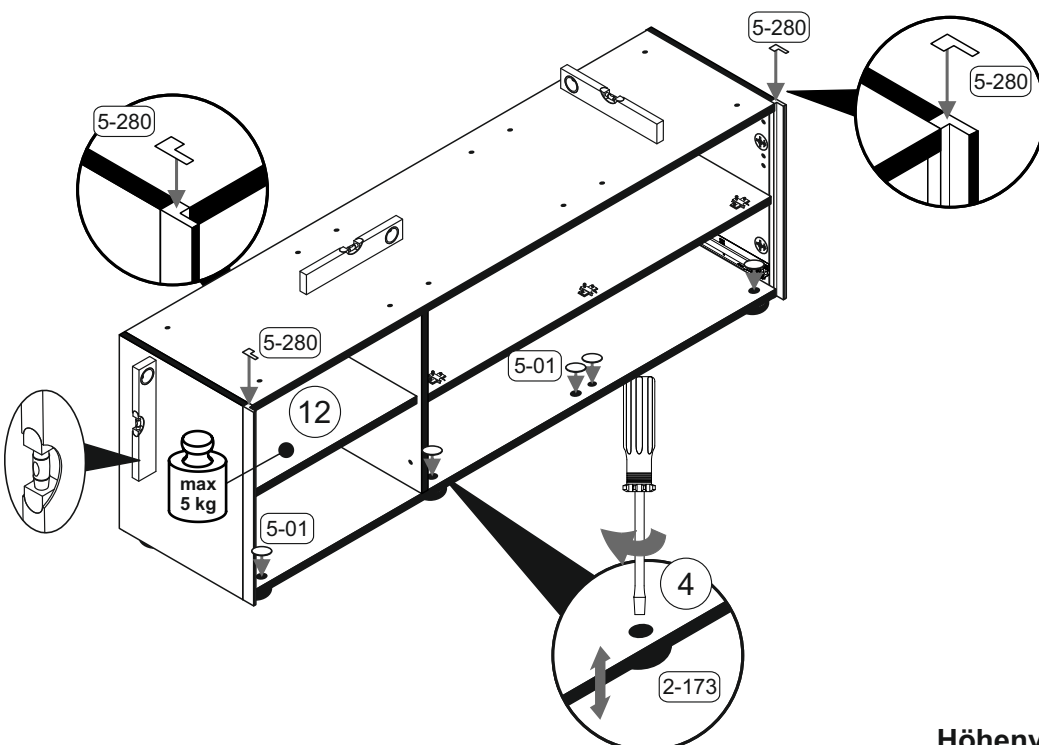



12



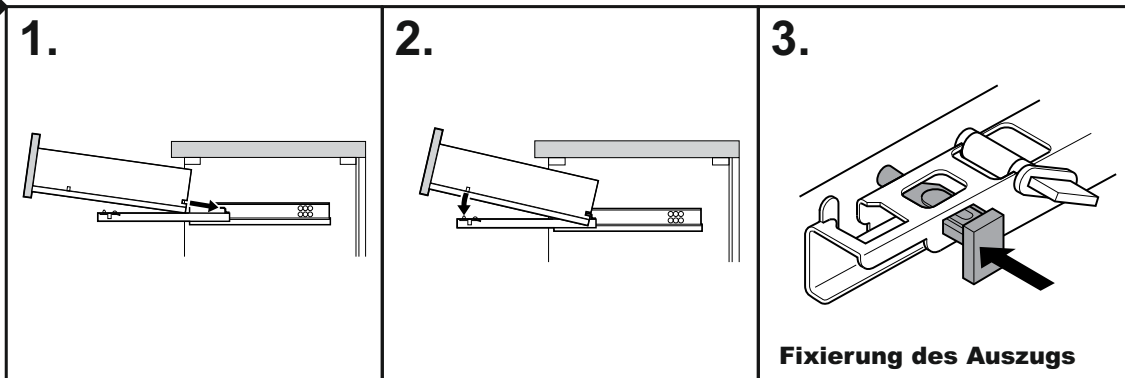
1-10		5-130	
2x	6,3x50	1x	LEIM



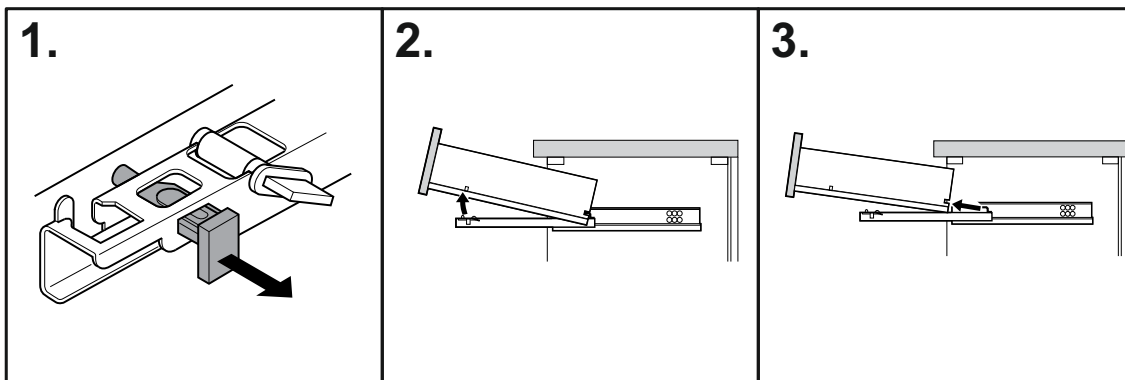


13

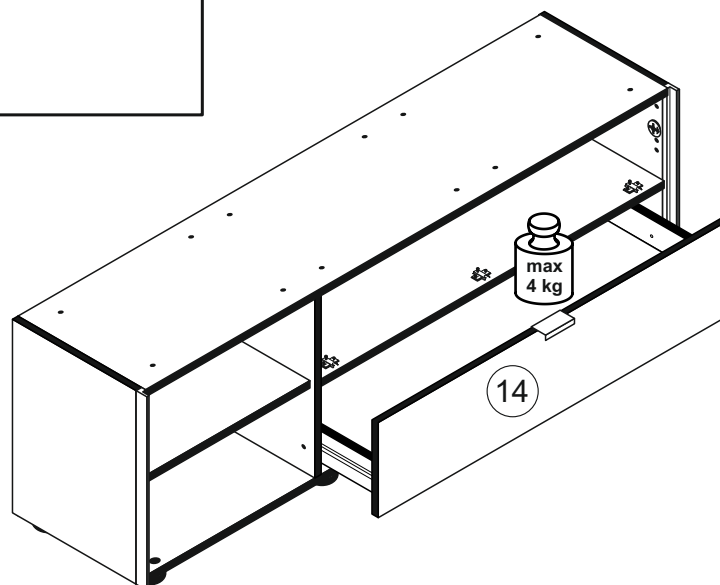
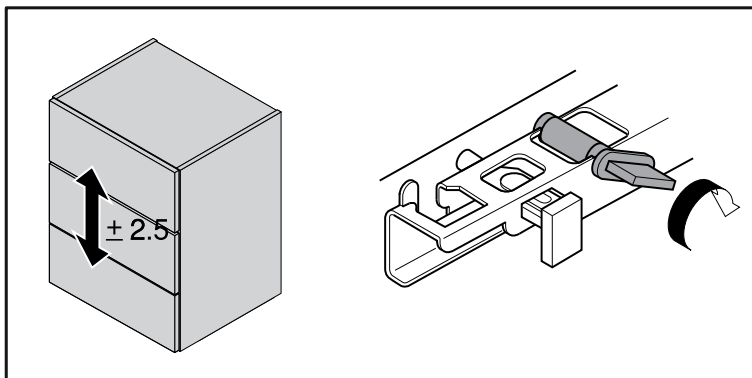
Einbau des Schubkastens



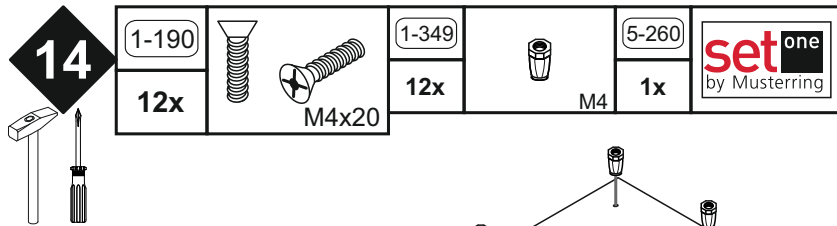
Ausbau des Schubkastens



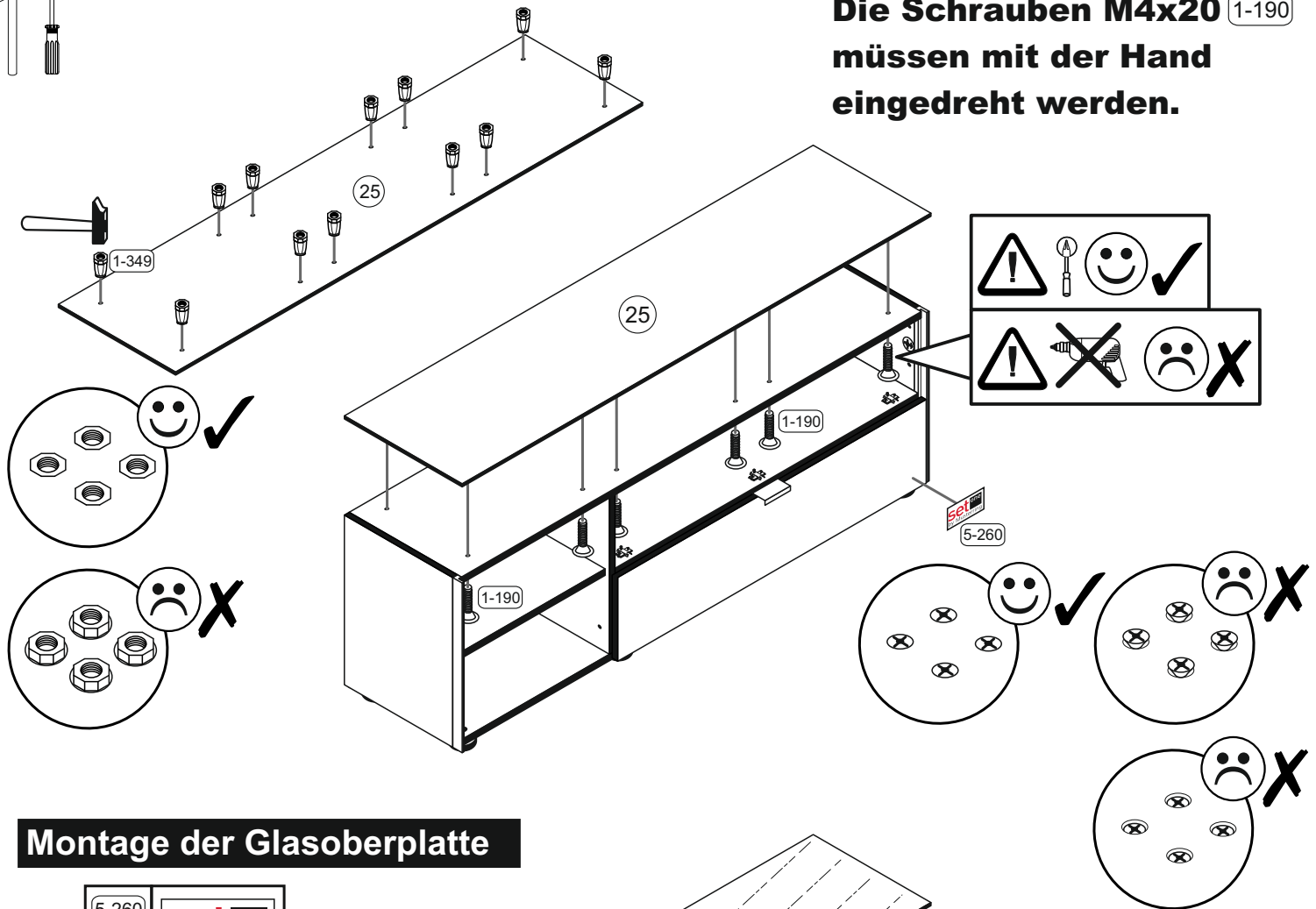
Höhenverstellung des Schubkastens



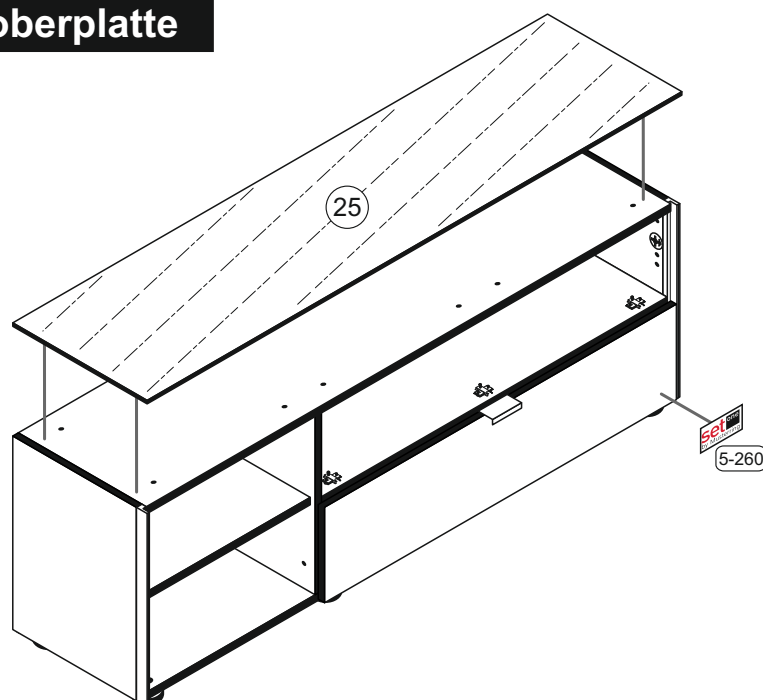
Montage der Holzoberplatte

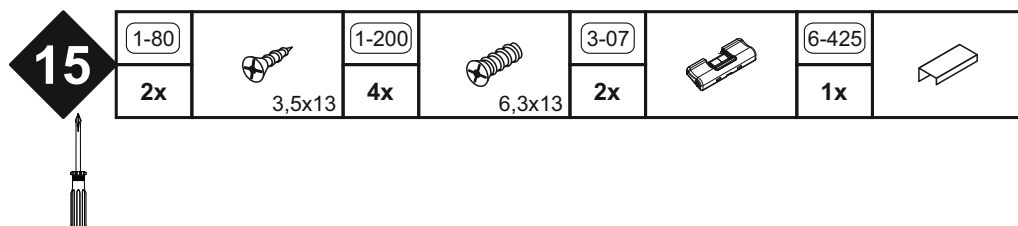


Die Schrauben M4x20 (1-190) müssen mit der Hand eingedreht werden.

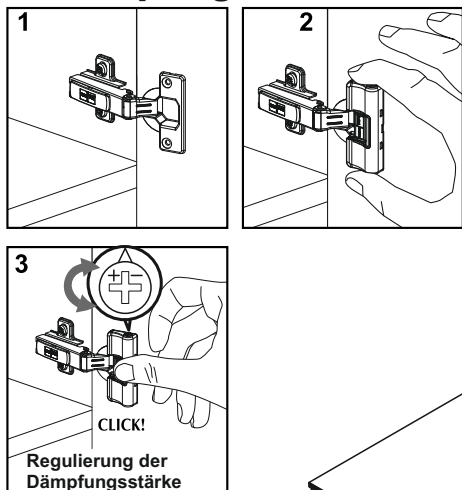


Montage der Glasoberplatte

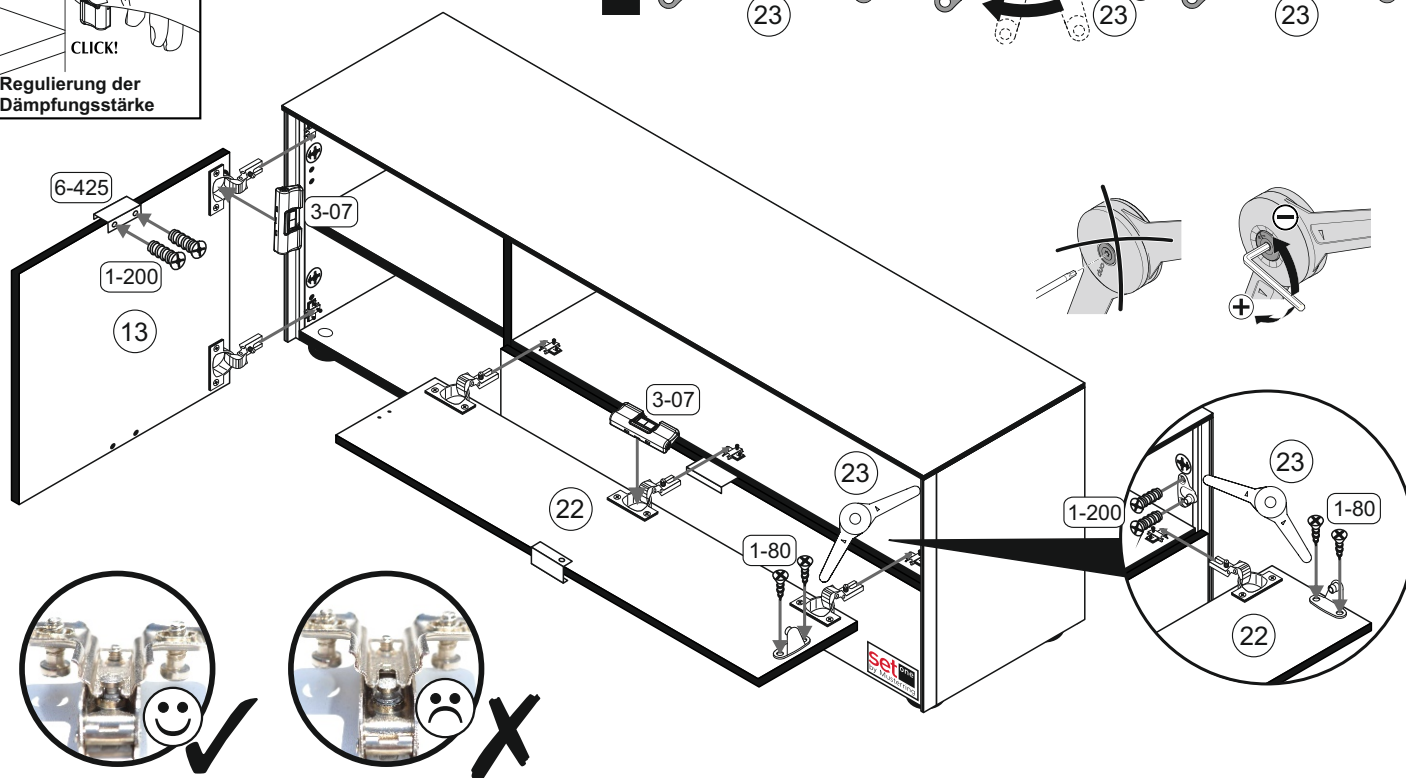
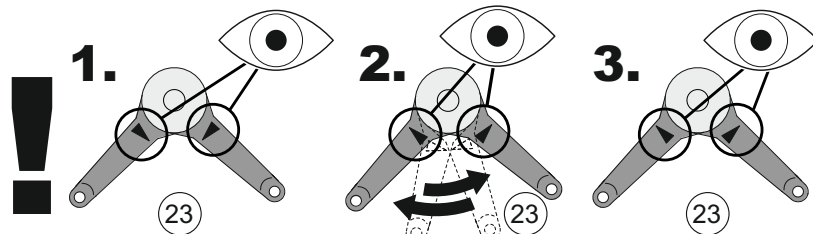




Montage der Türdämpfung



Stütze unten ⁽²³⁾ überdrehen



Türen einstellen (Scharniere justieren)
Adjusting the doors (adjusting the hinges)
Régler les portes (ajuster les charnières)
Sistemare le porte (regolare le cerniere)
Deuren instellen (scharnieren afstellen)
Nastawić drzwi (wyregulować zawiasy)
Vyrovnajte dvířka (seřid'te závěsy)
Nastavenie dverí (nastavenie závesov)
Állítsa be az ajtókat (állítsa be a zsanérokot)
Reglare usi (ajustare balamale)
Kapıların ayarlanması (menteselerin seviye ayarı)
Регулировка дверей (регулировка шарнира)

